

MERTON COUNCIL

Creating a local Healthwatch in Merton

Kris Witherington
Community Engagement Manager
Merton Council

www.merton.gov.uk



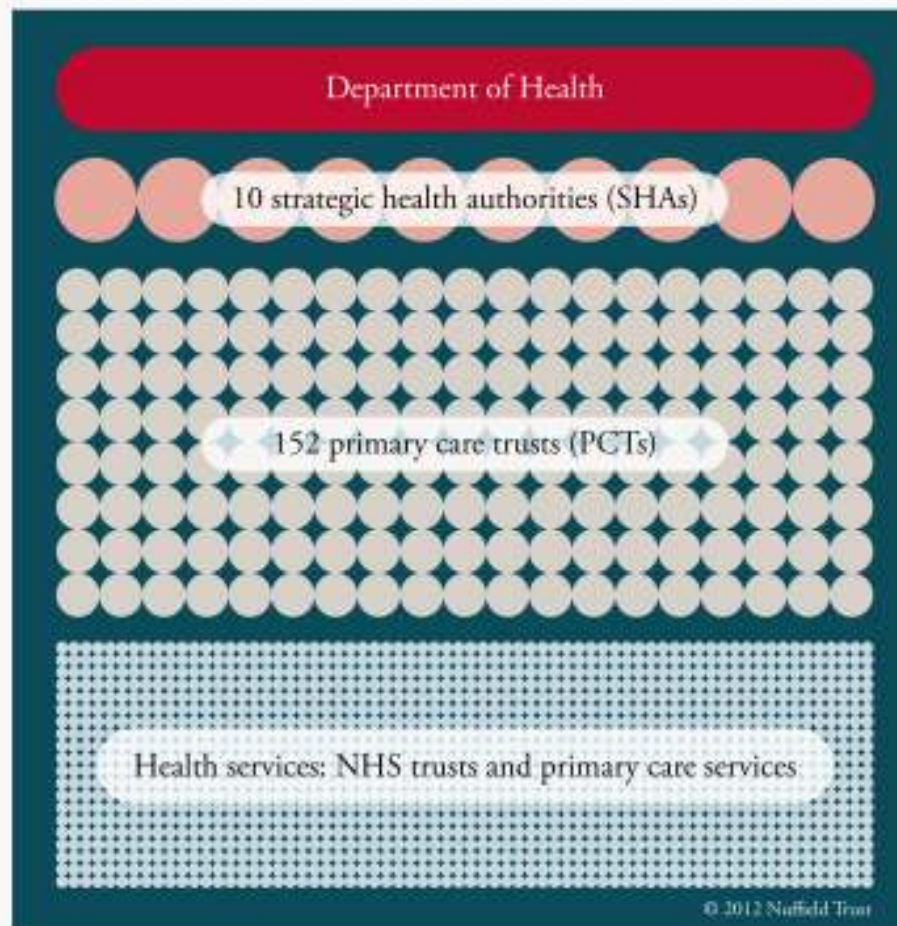
Introduction

- Changes to the NHS
- What is a local Healthwatch?
- The story so far
- Next steps

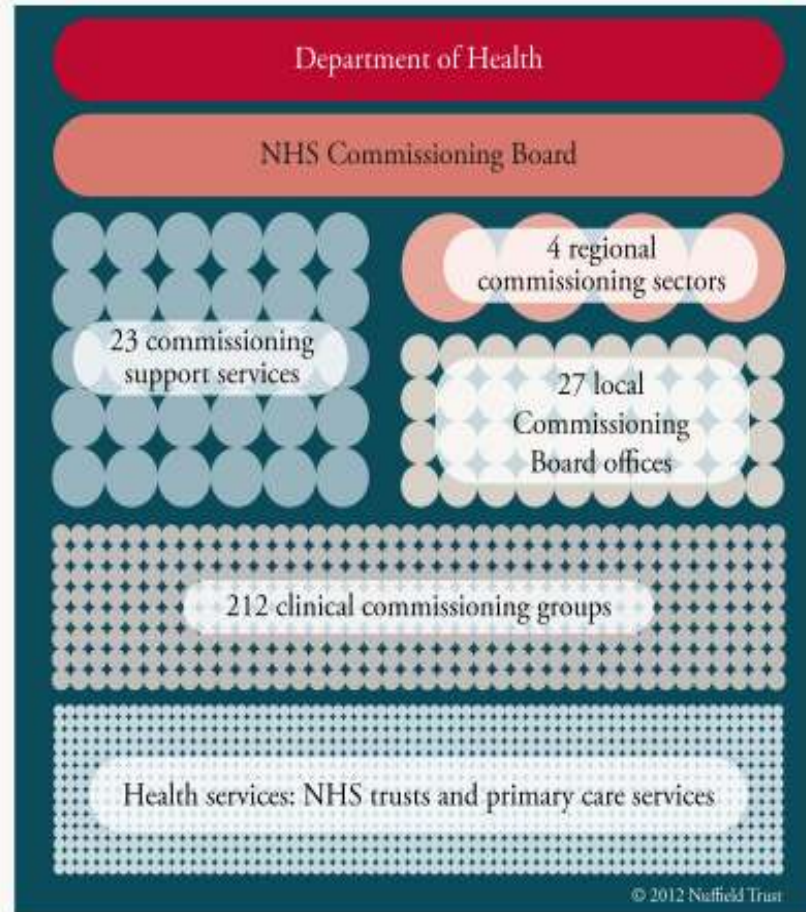
Changes to the NHS

- Health and Social Care Act 2012
- ‘Visible from space’
- Clinical Commissioning Groups
- NHS Commissioning Board
- Health and Well Being Boards
- Public health

The NHS in England before the reforms

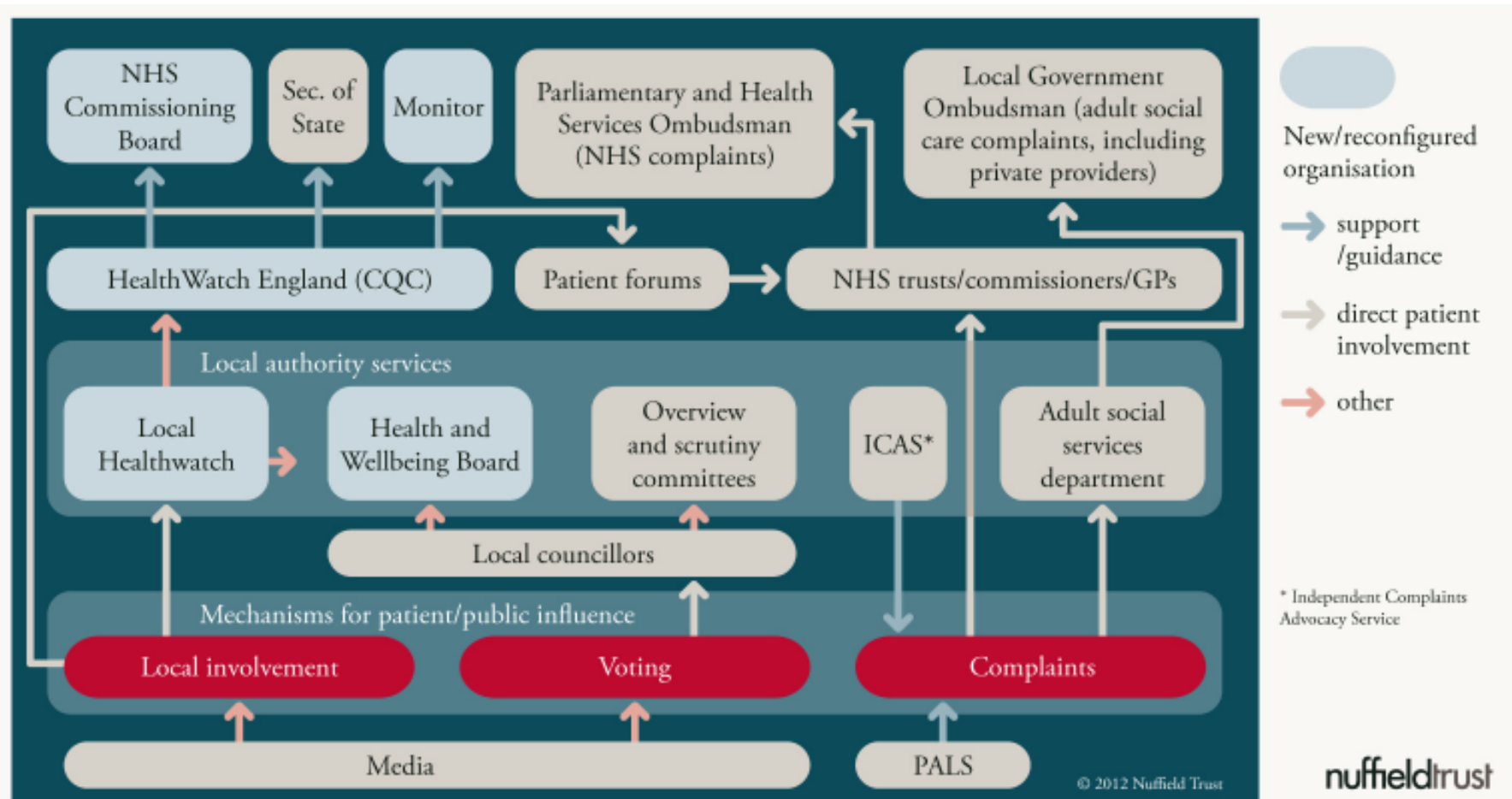


The new NHS



nuffieldtrust

How patients and members of the public can influence their health and social care services



What is local Healthwatch?

- Will replace Local Involvement Network as 'Independent consumer champion'
- Will also provide information and signposting services
- Commissioned by local authorities

What will Healthwatch look like?

- A single lead organisation will create a social enterprise
- Representing the voice of local community
- Value and support volunteers
- Working in partnership

What will Healthwatch do?

- Constant community engagement
- Use its statutory powers
- Provide a clear evidence base
- Review patient experience
- Influence commissioners and services
- Signpost to local services

Healthwatch connections

- Healthwatch England / CQC
- Health and Well Being Board
- Overview and Scrutiny
- Clinical Commissioning Groups

What has happened so far?

- Consultation in summer 2012
- Cabinet decision October 2012
- Draft specification November 2012
- Invitation to tender December 2012
- Bids received 1 February 2013

What happens next?

- Evaluation of bids during February
- Appointment of provider by 1 March
- Contract signed by 26 March
- Healthwatch Merton in place by 2 April 2013
- Continues LINk work plan
- Begins to set out new work plan

Contact details

Email: getinvolved@merton.gov.uk

Telephone: 020 8545 3896

Address: Civic Centre, London Road, Morden
SM6 9DE